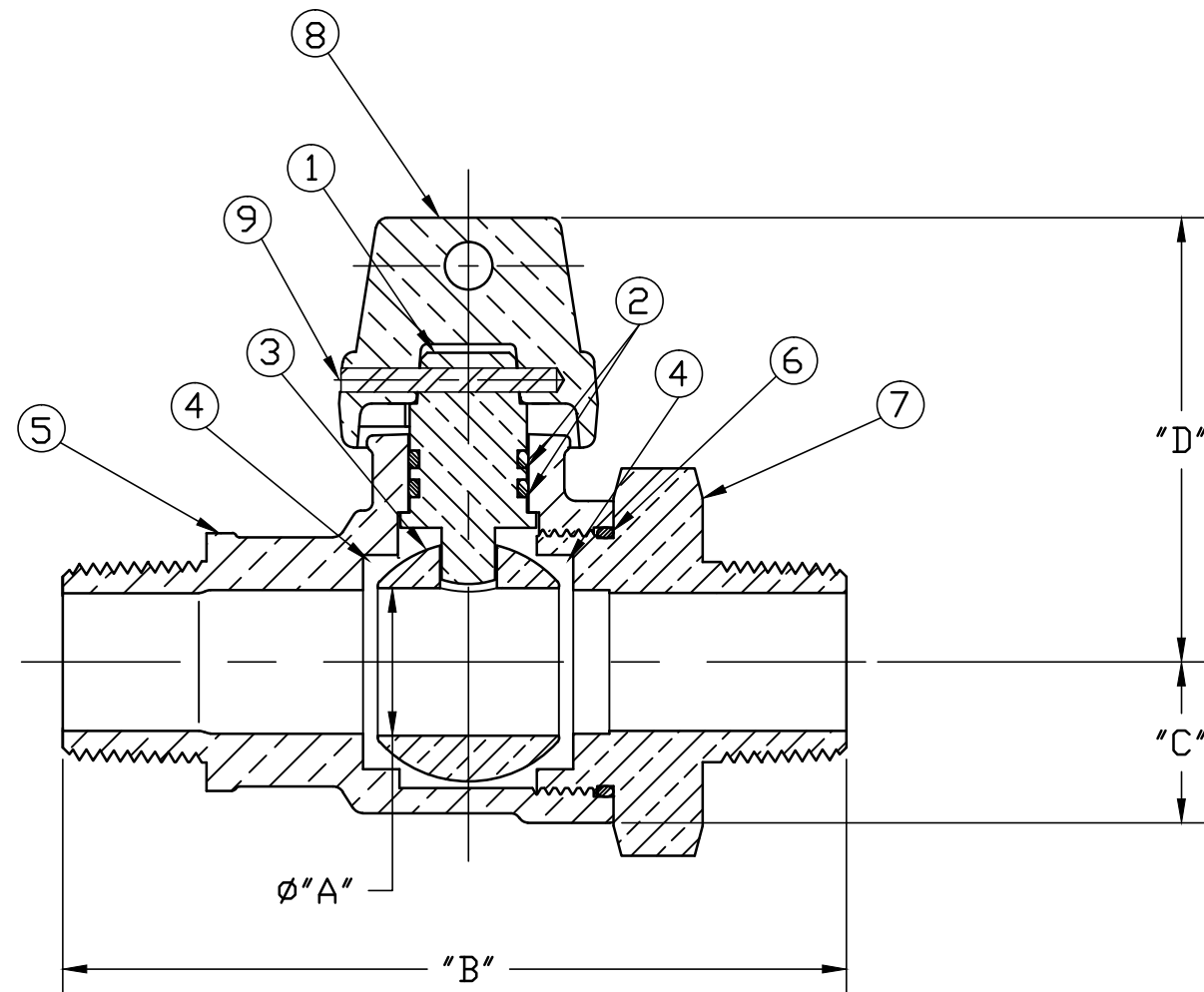


No.	DESCRIPTION	MATERIAL
1	STEM	LOW LEAD BRASS ALLOY
2	O-RING	EPDM ASTM D2000
3	BALL	LOW LEAD BRASS ALLOY
4	GASKET - SEAL	NITRILE ASTM D2000
5	BODY	CAST LOW LEAD BRASS ALLOY
6	O-RING	EPDM ASTM D2000
7	END PIECE	CAST LOW LEAD BRASS ALLOY
8	CAP	CAST BRASS ASTM B62 ALLOY C83600
9	SOLID PIN	AISI 303 STAINLESS STEEL



SIZE	øA	B	C	D
3/4"	.75	4.09	.84	2.32
1"	1.00	5.18	1.15	2.57
1-1/2"	1.50	6.41	1.50	3.37
2"	2.00	7.11	1.82	3.92

NOTE: ALL WETTED PARTS ARE LOW LEAD BRASS ALLOY

FILEPATH: PROD-ENG\MUELLER\ASYSUBMITTALS\B20276N

						DRFTR	RWB	5/7/15	Mueller Co.			
						CHKR					UNLESS OTHERWISE NOTED THIRD ANGLE PROJECTION SURFACE PREPARATION: BREAK CORNER(S) ---- .000 SURFACE FINISH -- XX RMS TOLERANCE(S): LINEAR ----- ± .000 ANGULAR ----- ± 0°00'	
						ENGR						REF. No. SCALE NONE
						MGR						
							BY	DATE	STK No:			
							MAT'L:		DESCR. INLINE LLB BALL CURB VALVE			
									MIP × MIP			
						REV	ECR	DESCRIPTION	DATE	BY	CHKR	DWG NUMBER
						PER EST NO: DXXXX EST FIN WT = 0.0000 lbs					B20276N	

DWG NUMBER
B20276N
442-MRKTNG

TITLE TO AND OWNERSHIP OF THIS ENGINEERING DATA REMAINS IN Mueller Co. NO USE IS TO BE MADE OF THIS DATA EXCEPT AS SPECIFICALLY AUTHORIZED BY Mueller Co. ASSENT ON THE PART OF THE RECIPIENT TO THESE CONDITIONS IS PRESUMED